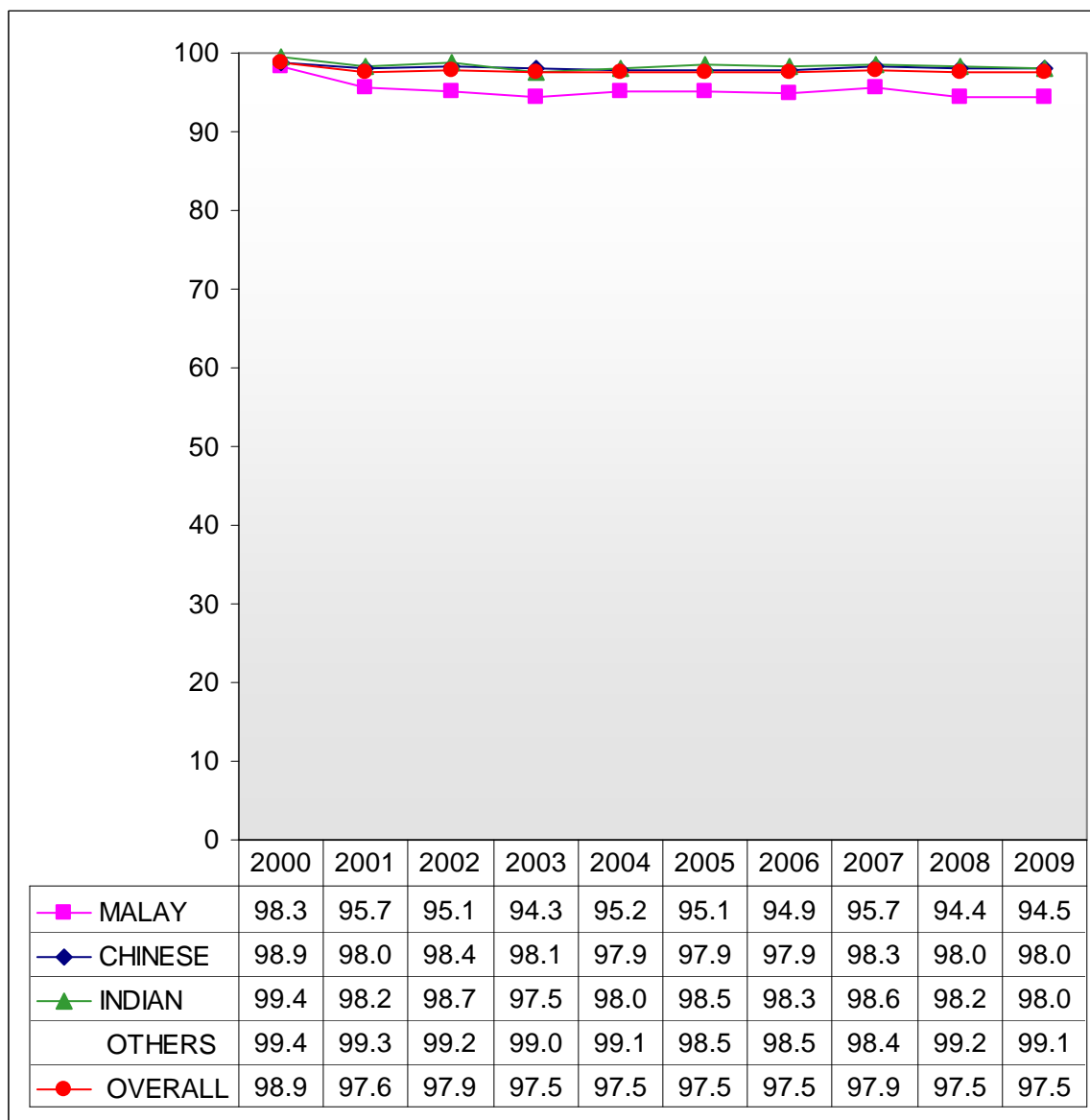
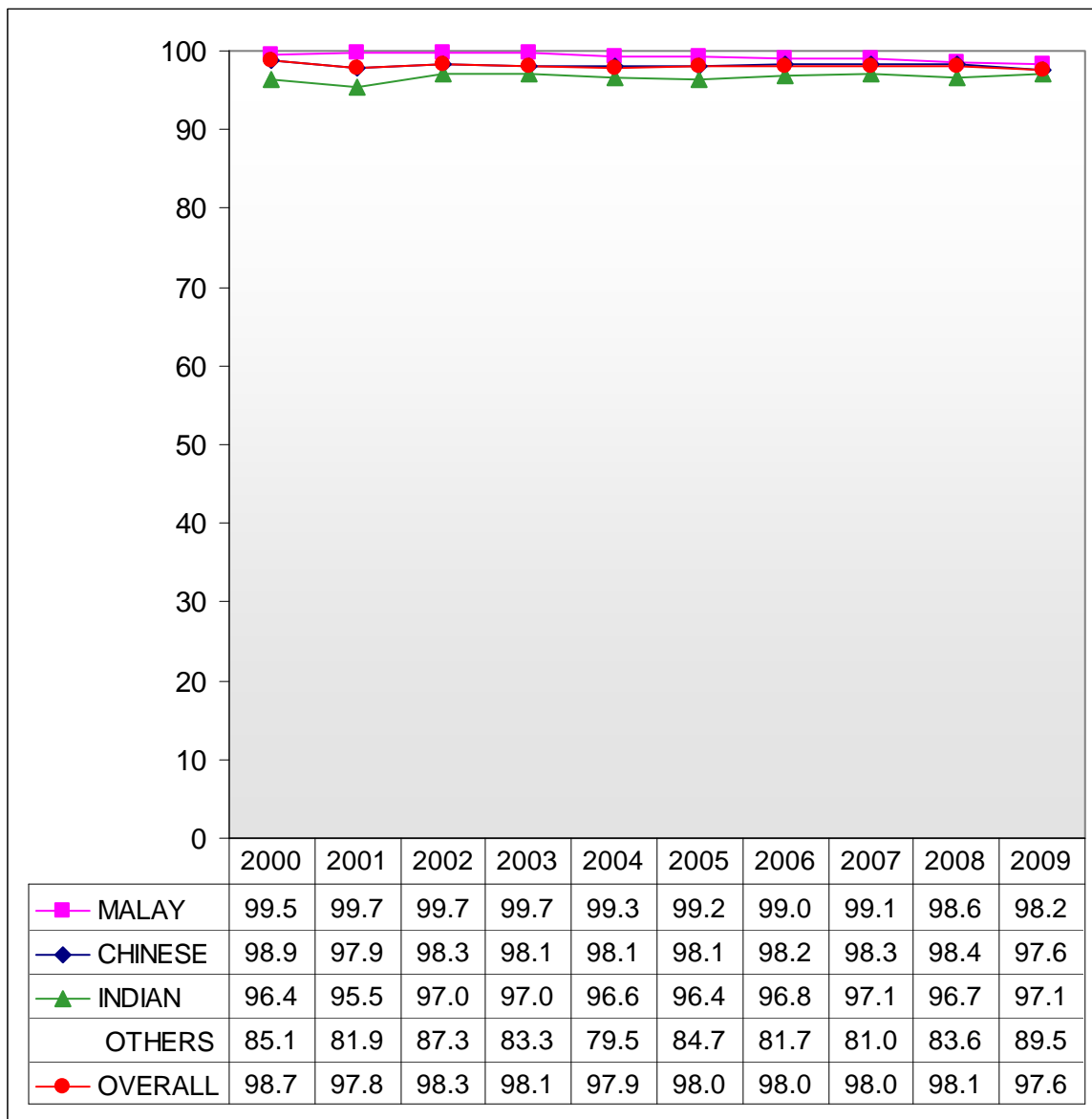


Chart A2: Percentage of PSLE Students who Scored A*-C in Standard English Language



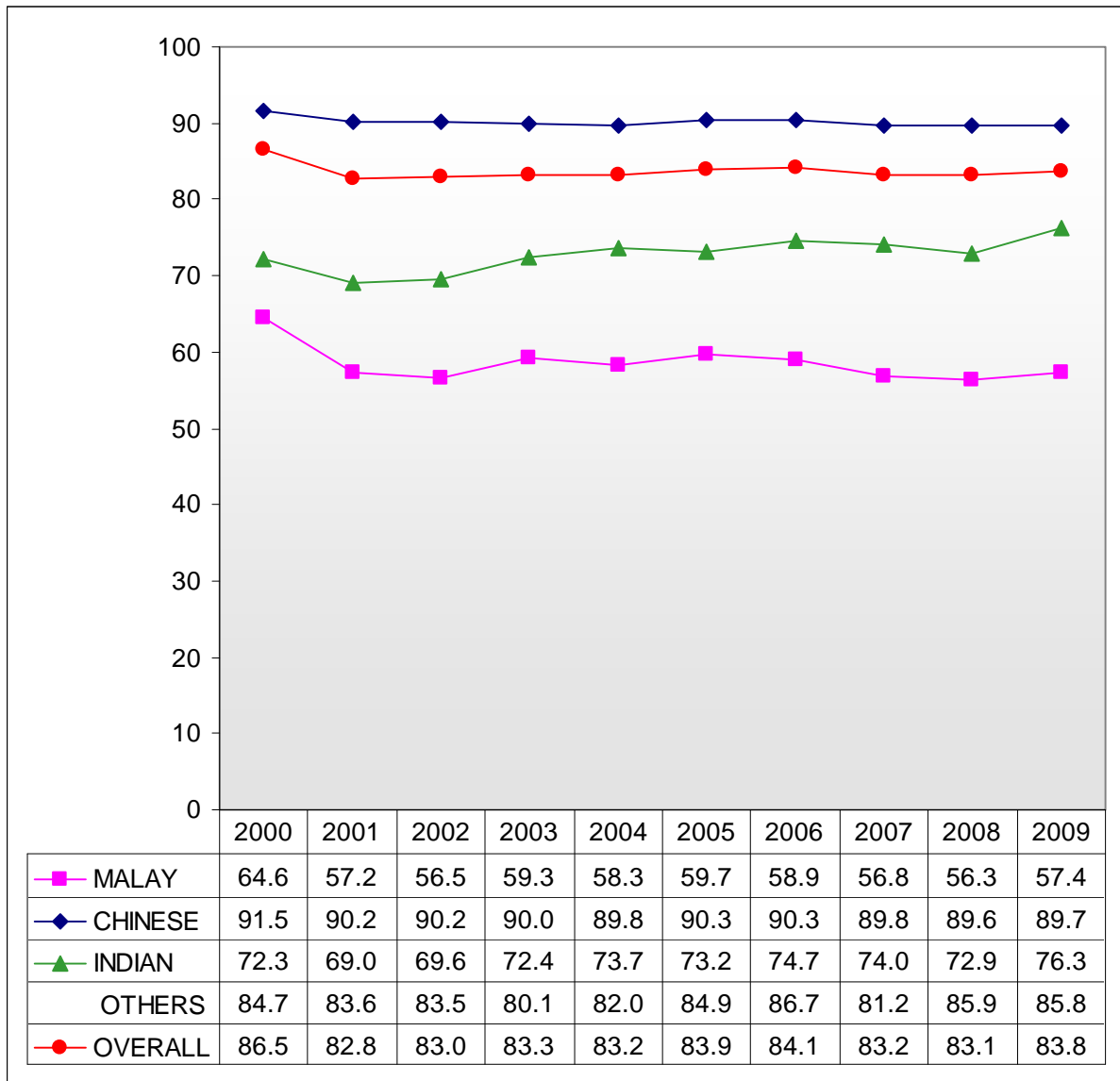
1 The first batch of students under the adjustment of the promotion criteria from P5 to P6 sat for PSLE in 2001.

Chart A3: Percentage of PSLE Students who Scored A* - C in Standard Mother Tongue Language



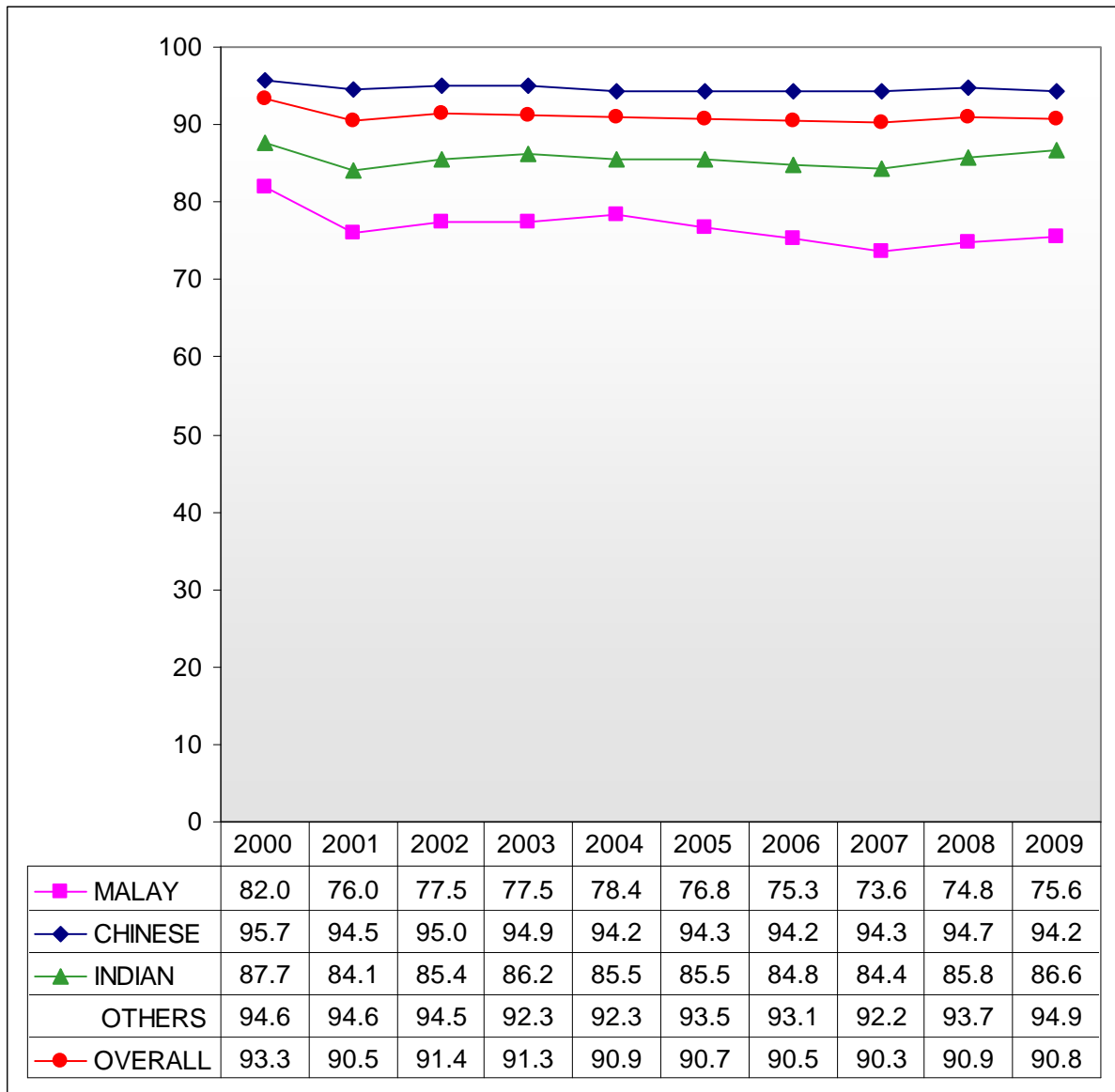
1 The first batch of students under the adjustment of the promotion criteria from P5 to P6 sat for PSLE in 2001.

Chart A4: Percentage of PSLE Students who Scored A* - C in Standard Mathematics



1 The first batch of students under the adjustment of the promotion criteria from P5 to P6 sat for PSLE in 2001.

Chart A5: Percentage of PSLE Students who Scored A* - C in Standard Science



1 The first batch of students under the adjustment of the promotion criteria from P5 to P6 sat for PSLE in 2001.