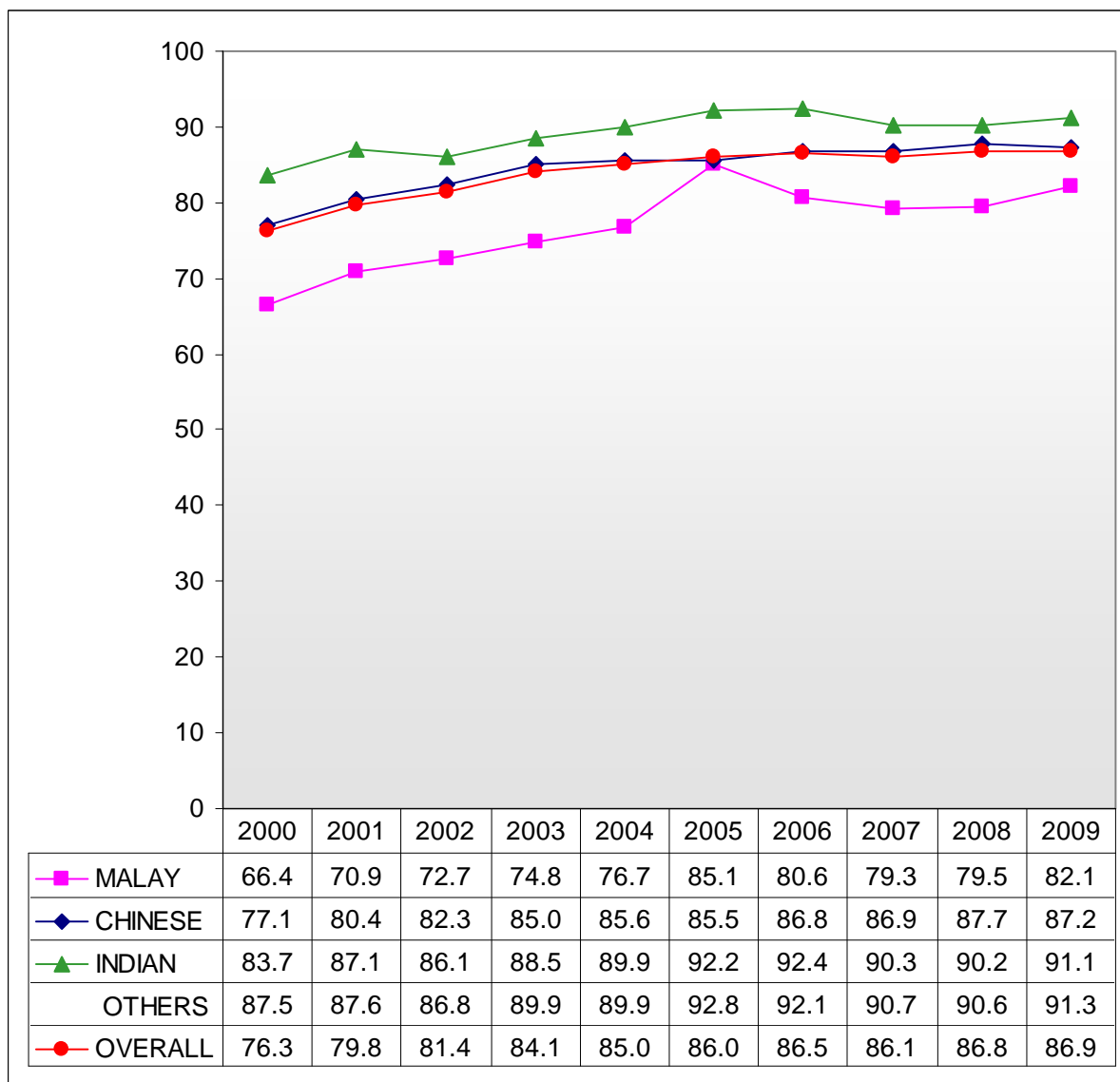
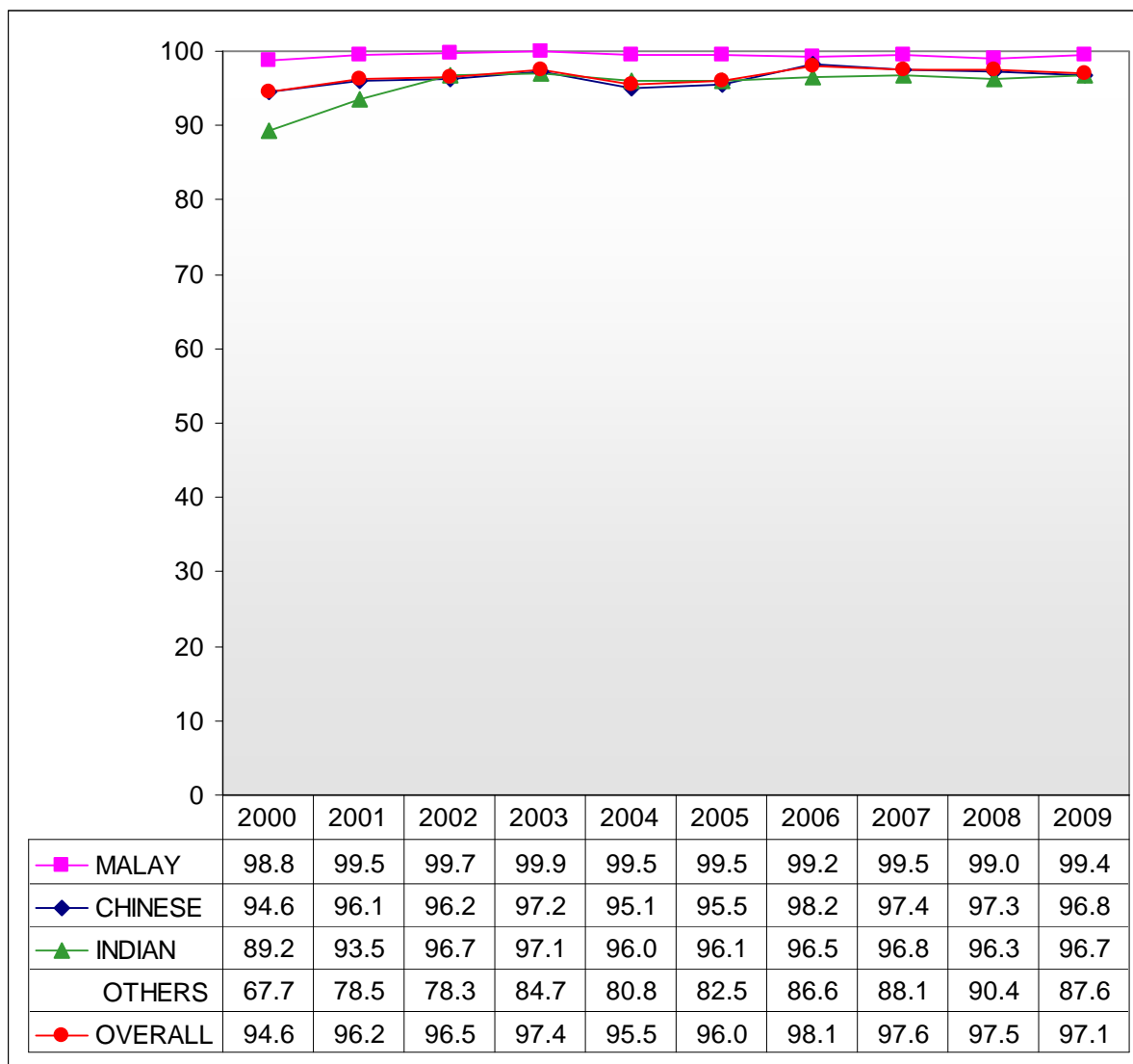


Chart B3: Percentage of GCE O-Level Students who Passed English Language



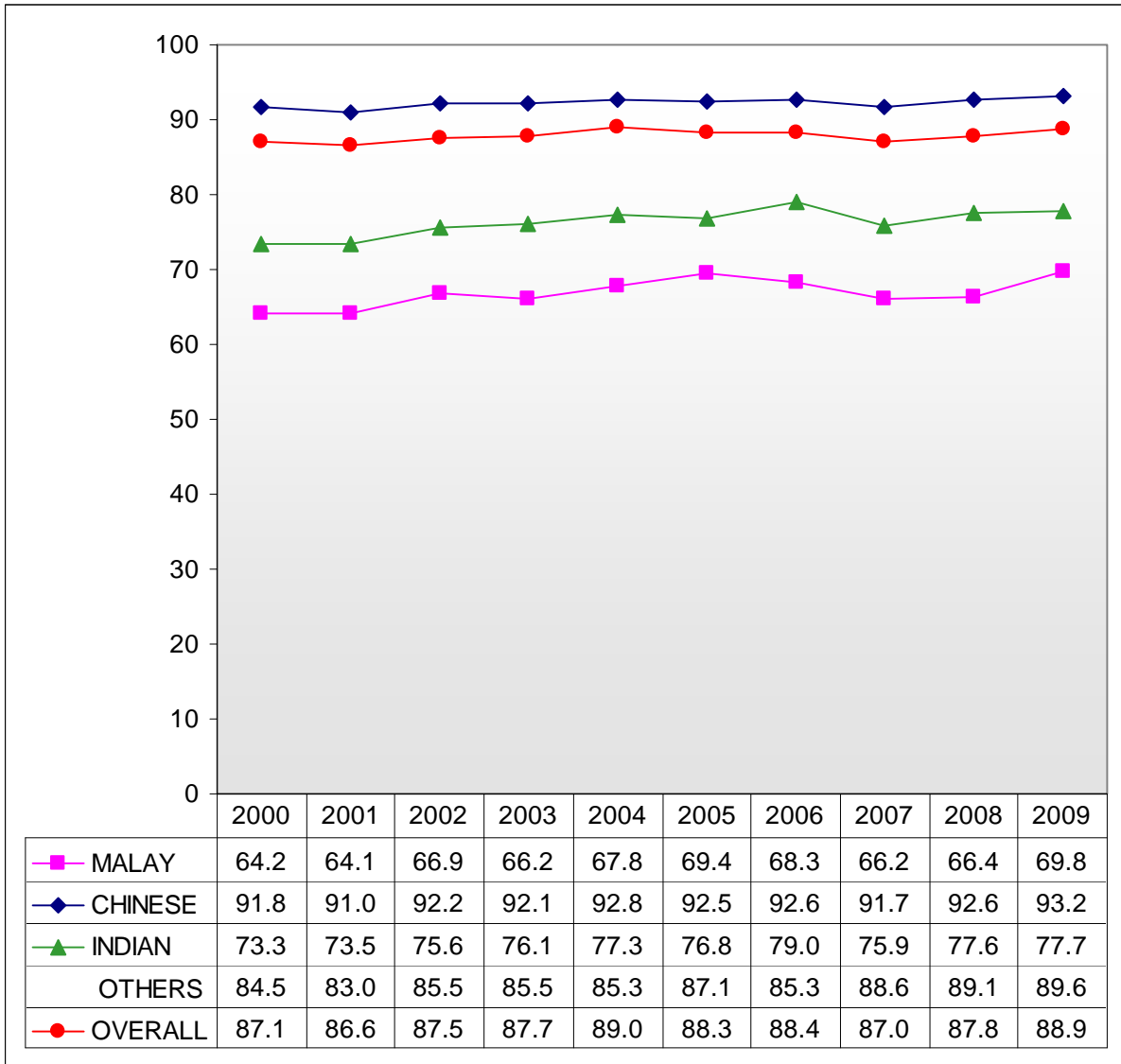
1 Figures from 2005 onwards exclude IP students.

Chart B4: Percentage of GCE O-Level Students who Passed Mother Tongue Language



1 Figures from 2005 onwards exclude IP students.

Chart B5: Percentage of GCE O-Level Students who Passed Mathematics



1 Figures from 2005 onwards exclude IP students.